

Auraa Design
www.auraadesign.co.uk

JACOPO



Environmental Credentials

Recycled Content



Recyclable Content



Recycled content includes pre and post consumer content. Manufactured using 87% renewable resources. Cardboard packaging used to package steel components are 80% recycled and 100% widely recyclable.

Jacopo is a bold and characterful tabling system for modern, vibrant working environments.

Some key features include:

- 'A' shape end leg design
- Robust powder coated steel under-frame
- 36mm MFC tops as standard
- Horizontal and vertical cable management options
- Optional Ply effect edging

Dimensions



Dining Height Tables - 740h

1600w x 900d mm
1800w x 900d mm
2000w x 1000d mm
2400w x 1000d mm
2400w x 1200d mm



Dining Height Tables - 740h

2800w x 1200d mm
3200w x 1200d mm
3600w x 1200d mm
4000w x 1200d mm




Dining Height Tables - 740h

4800w x 1200d mm

Finishes

Top Finishes - 36mm MFC

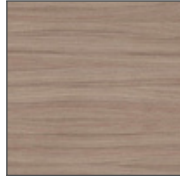
Square edge profile - 



Grey Oak



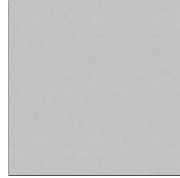
Light Oak



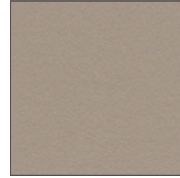
Shorewood



White



Light Grey



Stone Grey



Graphite



Black

Frame Colours



Black



Graphite



Telegray



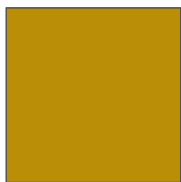
Silk Grey



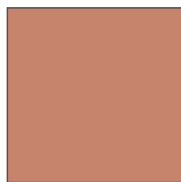
Pale Green



Moss Green



Ochre Yellow



Beige Red



Purple Red



Blue Lilac



Pigeon Blue



Turquoise

aura design



Hub Spaces, 582 Honeypot Lane, Stanmore, HA7 1JS, UK
www.auraadesign.co.uk
020 3915 8008
info@auraadesign.co.uk