

Auraa Design
www.auraadesign.co.uk

IBHYA



Environmental Credentials

Recycled Content



Recyclable Content



Recycled content includes pre and post consumer content. Manufactured using 87% renewable resources. Cardboard packaging used to package steel components are 80% recycled and 100% widely recyclable.

Please note: statistics may vary depending on finishes/model selected.

Ibhya is a robust pedestal base table system available in a number of configurations with the option for cable management.

Some key features include:

- Robust powder coated steel pedestal base design
- Cable managed version available
- 25mm MFC or MFMDf table tops with rounded corners
- Compatible with power, data & media options
- 25mm MFC with ply effect or contrasting edge option

Dimensions



Cable Managed* - 740h

800w x 800d mm
1000w x 1000d mm
1200w x 1200d mm



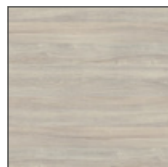
Cable Managed* - 740h

800w x 800d mm
900w x 900d mm

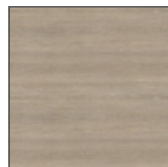
Finishes

Top Finishes - 25mm MFC

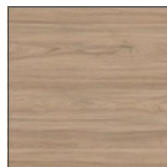
Square edge profile -



Silver Elm



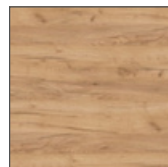
Lorenzo Oak



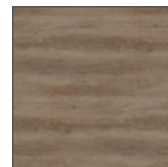
Natural Elm



Light Oak



Gold Oak



Grey Oak



White



Light Grey



Taupe Grey



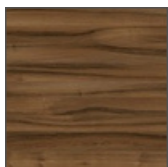
Stone Grey



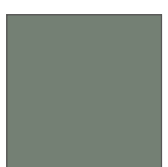
Graphite



Black



Walnut



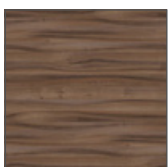
Reed Green

Top Finishes - 25mm MFMDf

Undercut edge profile -



Oak



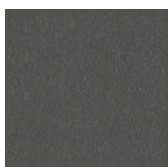
Walnut



White

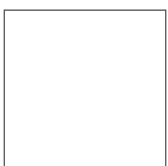


Light Grey



Dark Grey

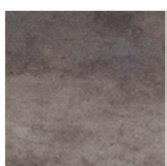
Base Finishes



White



Black



Clear Lacquer

aura design



Hub Spaces, 582 Honeypot Lane, Stanmore, HA7 1JS, UK
www.auraadesign.co.uk
020 3915 8008
info@auraadesign.co.uk