

Auraa Design
www.auraadesign.co.uk

CIRILLO

Single Desk



Double Sided Bench Desks





Cirillo is a height adjustable desking system that brings a perfect balance of design, function and value.

- Includes 25mm MFC tops with cable scoop and rounded corners and electric actuators featuring ‘anti-collision technology’ as standard.
- Features a robust powder coated steel framework construction, available in White, Black or Clear Matt Lacquer/black actuator columns.
- Height range of 650-1300mm.
- There are horizontal and vertical cable management options, and six different compatible desk screen systems available.
- Also available with optional ply effect edging, compatible modesty panels and an optional memory control switch.

Environmental

MFC Components

Recycled Content



Recyclable Content



Recycled content includes pre and post consumer content, Also manufactured using 87% renewable resources.

Steel Components

Recycled Content



Recyclable Content



Cardboard packaging used to package steel components are 80% recycled and 100% widely recyclable.

Dimensions

Single Desk

H650-1300



1200w x 800d mm
1400w x 800d mm
1600w x 800d mm
1800w x 800d mm

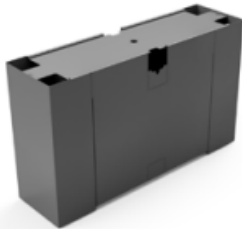
Double Sided Bench (2 Person)

H650-1300



1200w x 1600d mm
1400w x 1600d mm
1600w x 1600d mm
1800w x 1600d mm

- Links 2 End Legs Together for 4 & 6 Person




- Memory Control Switch



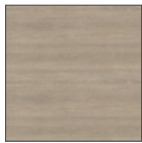
Finishes

Top Finishes - 25mm MFC

Square edge profile - 



Silver Elm



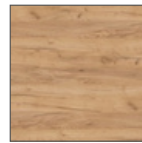
Lorenzo Oak



Natural Elm



Light Oak



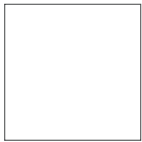
Gold Oak



Grey Oak



Walnut



White



Light Grey



Taupe Grey



Stone Grey



Graphite



Black



Reed Green

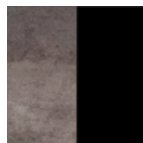
Frame Colours



Black



White



Clear Matt
Lacquer/
Black

aura design



Hub Spaces, 582 Honeypot Lane, Stanmore, HA7 1JS, UK
www.auraadesign.co.uk
020 3915 8008
info@auraadesign.co.uk