

Auraa Design
www.auraadesign.co.uk

CARLO





Environmental Credentials

MFC Components

Recycled Content



Recyclable Content



Recycled content includes pre and post consumer content, Also manufactured using 87% renewable resources.

Steel Components

Recycled Content



Recyclable Content



Cardboard packaging used to package steel components are 80% recycled and 100% widely recyclable.

Carlo is a robust and economical table range, available in multiple different sizes,

- Includes 25mm MFC tops as standard
- Features a robust powder coated steel framework construction, available in White.
- Black or Clear Matt Lacquer with a 60 x 30mm end leg profile
- Cable management options
- Available with optional ply effect edging

Dimensions



Square Tables - 740h

W1200 x D1200 mm
W1600 x D1600 mm



Rectangular Tables - 740h

W1400 x D1200 mm
W1600 x D1200 mm
W1800 x D1200 mm
W2000 x D1200 mm
W2400 x D1200 mm
W2800 x D1200 mm
W3200 x D1200 mm
W3600 x D1200 mm
W4000 x D1200 mm




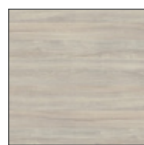
Rectangular Tables - 740h

W2000 x D1600 mm
W2400 x D1600 mm
W2800 x D1600 mm
W3200 x D1600 mm
W3600 x D1600 mm
W4000 x D1600 mm

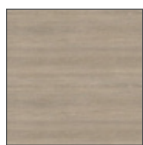
Finishes

Top Finishes - 25mm MFC

Square edge profile - 



Silver Elm



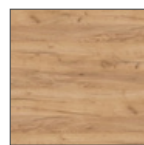
Lorenzo Oak



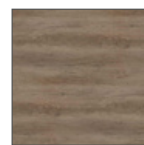
Natural Elm



Light Oak



Gold Oak



Grey Oak



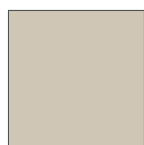
Walnut



White



Light Grey



Taupe Grey



Stone Grey



Graphite



Black



Reed Green

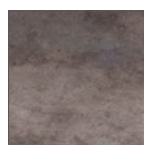
Frame Colours



Black



White



Clear Lacquer

aura design



Hub Spaces, 582 Honeypot Lane, Stanmore, HA7 1JS, UK
www.auraadesign.co.uk
020 3915 8008
info@auraadesign.co.uk