

aura
design

Armando

Armando



FEATURES

- Easy to assemble and disassemble (“metal to metal”).
- Two tools for assembling.

TECHNICAL INFORMATION

Wooden base

- Straight and curved segments are made from 18 mm birch plywood, covered with modified and lacquered oak veneer;
- All edges are rounded: R1 mm;
- Segments joins with plastic connectors, using hexagon key SW4;
- Each straight panel has two height adjustable plastic legs (+15mm).

High back segments

- Internal metal frame molded with PU foam (100 kg/m³);
- Has zippers on the sides to connect each part;
- Connects to wooden base with plastic brackets (PA66+15GF).

Seat cushions

- One seater square seat cushion (650x650x130 mm) is made from PU foam (65-70 kg/m³);
- Upholstered with fabric;
- Sewed soft “Velcro” pads (Ø45 mm) on the bottom of the cushion;
- Seat height from the floor – 450 mm;
- Seating depth – 530 mm.

Back cushions

- Base (515x375 mm) is made from black 18 mm MFC (melamine) with 2 mm ABS edging;
- Filled with cut foam VB3842 (520x380x140 mm);
- Upholstered with fabric by using staples;
- Back cushions are fastened to the wooden base.

Table

- Tabletop (1100x800 mm) is made from 18 mm birch plywood, covered with modified and lacquered oak veneer;
- All edges are rounded: R1 mm;
- Tabletop is fastened to the wooden base with 2 metal sheet (4 mm) brackets;
- Tabletop height from the floor – 720 mm.

Seat base

- Base under the seats (1280x600x80 mm) is made from black 18 mm MFC (melamine), with 1 mm ABS edging;
- Beam under the seat base is made from powder coated metal tube 40x40 mm;
- Upholstered part is made from powder coated metal tube 70x20 mm;
- Softened with foam VB3842;
- Upholstery joins to the tube with „Velcro“ straps;
- Seat base construction is fastened to the wooden base;
- Hard „Velcro“ pads (Ø45 mm) are glued on the base for seat cushions fixing;
- Recommended load up to 110 kg per one seat.

Wiring

- Upper wiring cover (100x340 mm) is made from 18 mm birch plywood, covered with modified and lacquered oak veneer and is fixed to monitor holder;
- Lower wiring cover (592x340 mm) is made from 18 mm birch plywood, covered with modified and lacquered oak veneer and is fixed with 2 powder coated metal tubes 20x20 mm;
- All edges are rounded: R1;
- Gap between wooden base and lower wiring cover – 20 mm;
- Wiring cover under tabletop attaches to wooden base metal;
- Box for wires (340x169x95 mm) is made from powder coated metal (1 mm) and placed under the tabletop with possibility to mount power socket block inside of it.

Power socket

- 1 AC power socket 100 – 230 V;
- Integrated USB fast charger (USB Type A+C, max 5,6A);
- 1 cable guide for multimedia cable;
- Mounting in Ø80 mm cut-out;
- Dimensions: Ø90x66 mm;
- Power socket standards: EU, FR, UK, US, CH;
- Cable length: 3,8 m.

Table leg

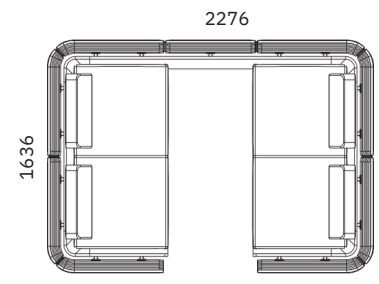
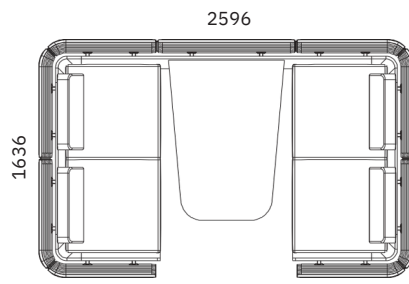
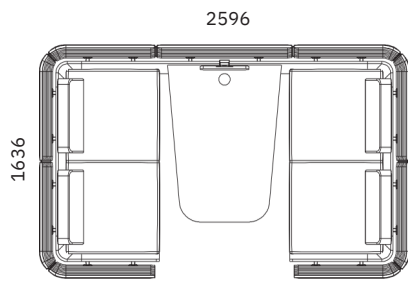
- Lacquered and stained natural ash solid wood leg (694x54x59 mm) with metal plate 120x120x4 mm for fastening it to the tabletop;
- Plastic feet with height levelling (+15 mm).

Monitor holder

- Monitor holder base is made from powder coated metal tube 70x20 mm, 390 mm height;
- VESA plate (120x120 mm) made of 2 mm metal sheet;
- VESA standards – 75x75 mm, 100x100 mm and recommended weight up to 10 kg;
- VESA plate can be fixed to the holder in 3 different heights;
- Bolts for flat screen assembly are not included.

Power socket

- 1 AC power socket 100 – 230 V;
- Dimensions: 90x66 mm;
- Mounting in Ø80 mm cut-out;
- Power socket standards: EU, FR, UK, US, CH;
- Cable length: 3,8 m.



Must be ordered (for)



Power socket

or

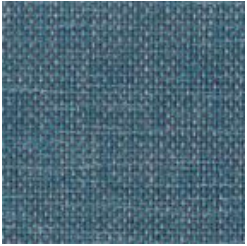


Power socket

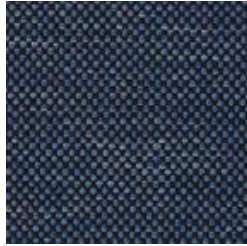
Armando / Colours

Berta

Cat. 1



AD6



AD9



AI2



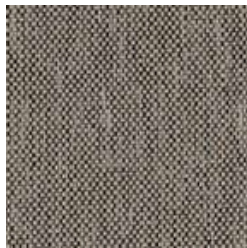
AI8



AI1



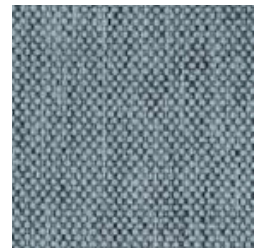
AD7



AI3



AI4



AI6



AI5



AD8



AI0



AI7



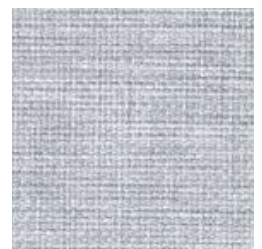
AD0



AD1



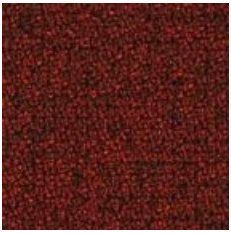
AD2



AD3

Step | Step Melange

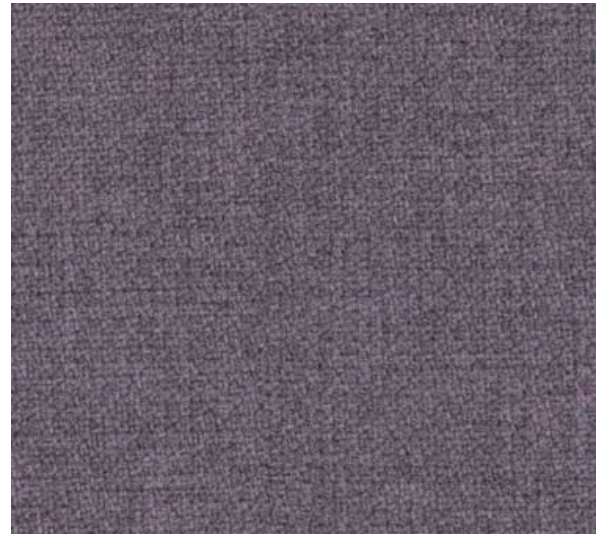
Cat. 2 | Cat.3



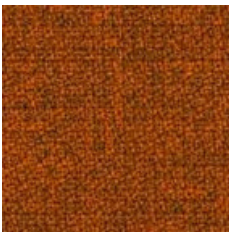
*63075 L24



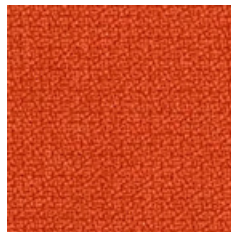
*64013 L18



*65093 LY2



*63082 L10



*63082 L11



*62057 L16



*62057 L17



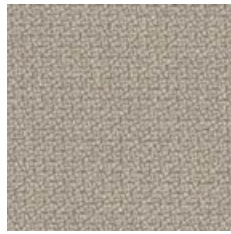
*68119 L08



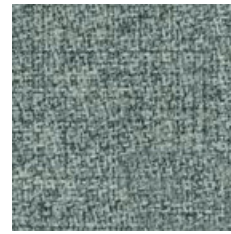
*68161 L26



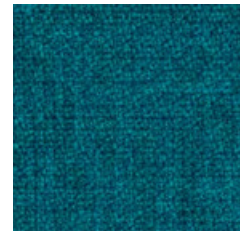
*61104 L70



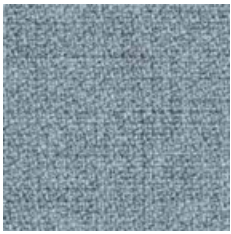
*61149 L15



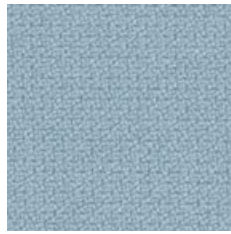
*68118 L50



*67007 L02



*67004 L06



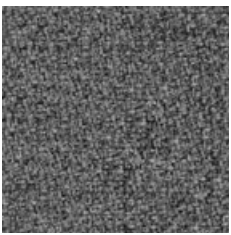
*67004 L07



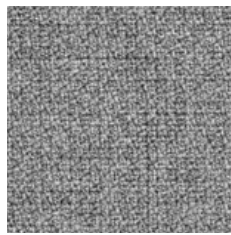
*67072 L28



*66149 L04



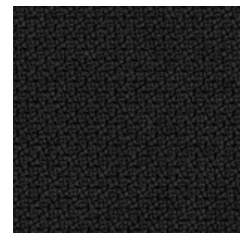
*60011 L34



*60004 L12



*66019 L20



*60999 L01

Synergy

Cat. 3



* LDS84 S84



* LDS73 S73



* LDS32 S32



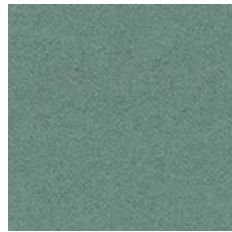
* LDS74 S74



* LDS37 S37



* LDS45 S45



* LDS49 S49



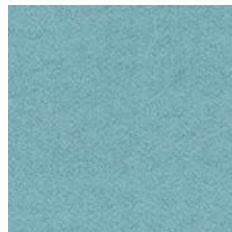
* LDS48 S48



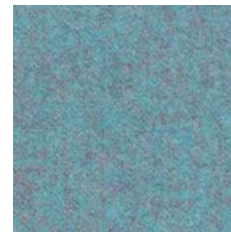
* LDS42 S42



* LDS46 S46



* LDS55 S55



* LDS56 S56



* LDS59 S59



* LDS08 S08



* LDS63 S63



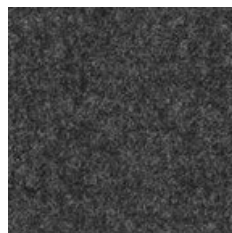
* LDS62 S62



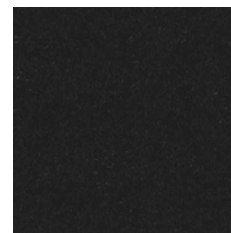
* LDS61 S61



* LDP16 S16



* LDS17 S17



* LDS27 S27



* LDS70 S70

aura design



Hub Spaces, 582 Honeypot Lane, Stanmore, HA7 1JS, UK
www.auraadesign.co.uk
020 3915 8008
info@auraadesign.co.uk